



**Be**dazzle 

# ANNUAL REPORT

JULY 2019 - JUNE 2020  
YEAR 4



# SUMMARY

In light of the obvious difficulties we have all faced this year, we are pleased that our engagement figures were consistent with last year and would have no doubt shown growth had we not all been rocked by this global pandemic.

Despite not being able to deliver face to face sessions for the final quarter and schools being shut, our team worked hard to adapt to offering remote support and moving some of our training online, so we could continue to engage with our beneficiaries, who due to the pandemic, needed even more support.

This year we have continued to develop our interventions and support offers, working more closely with teachers and parents within our schools and communities, to help them look after themselves and therefore be more able to support the young people they are responsible for.

We have also worked on strengthening our impact measurement and evaluations, that will help to support our new strategic development and funding strategy moving forward.

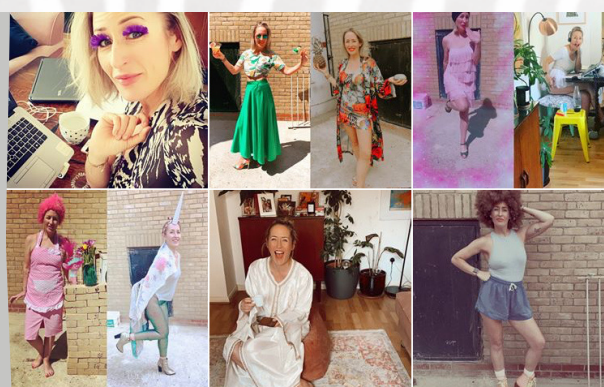
We have strengthened our existing provisions and formed many new relationships and ideas that leave us feeling excited for the next year. The Trustees would like to thank everyone who has supported us this year, it really does make a massive difference.



ManpowerGroup™



**ManpowerGroup UK is partnering with Youth Development Charity Bedazzle throughout 2020.**



We have been grateful for the fundraising efforts of ManpowerGroup, despite many national fundraising events being disrupted. We hope we can build on this relationship further when things return to normal.

We have also been fortunate to be selected as one of the Co-Op Local Community Organisations this year, meaning members who select us as their chosen charity will help raise funds for us from their purchases.



Local Community Fund

# HIGHLIGHTS & TIMELINE

July 2019 - Youth Mental Health First Aider Course, at The Bond Company in Birmingham

- Our third annual Well-being Week at Milking Bank Primary School, Dudley.

August 2019 - WYMT 20th Anniversary production of Rock of Ages.

- Our GCSE Dance Cohort for Tettenhall College achieved 100% pass rate

September 2019 - Guest Appearance on Unity FMs Mental Health Slot

October 2019 - Several Youth Mental Health First Aid courses delivered for World Mental Health Day

December 2019 - Snowdon Christmas Day Sponsored Climb for Mental Health

January 2020 - Training with NEU and MHFA First Aider, Wolverhampton

February 2020 - Several Youth Mental Health First Aid courses delivered for Children's Mental Health Week



April 2020 - 2.6 Lockdown Fundraising Community Challenge

May 2020 - Delivered Online MHFA Aware Training, focusing on welcoming children back to school and celebrating Mental Health Awareness Week with our Kindness Challenge.

June 2020 - Ran our Shooting Stars Pilot with over 60, Year 6 students, across 3 schools to support Transition to Secondary and recovery from Lockdown



Christmas Day  
Snowdonia  
Mountain  
Walk





# WORK IN SCHOOLS

This year we have secured contracts to provide SEMH support workers in schools, one day a week with 3 partner schools, one of which we are now entering our 4th year working together. We have continued to provide training, workshops and 'ad-hoc' or brief interventions with numerous other schools and colleges. This has also included more campaigns raising awareness of Mental Health across whole school communities, including staff and parents.

More recently with the uncertainty looming around Covid 19, we have seen many services shut down at a time when people's Mental Health and well-being is affected more than ever. Therefore, we have been able to utilise our presence within the schools to find novel ways of keeping people connected. Right now, we are preparing to return to schools, as they re-open and will get to see the real stories and affects of lockdown.



## 30

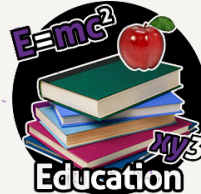
*Assemblies, Fayres  
Workshops,  
Webinars*



## 150

*Young people  
supported in 1:1 or  
small group  
interventions*

We have offered direct support with a therapeutic approach to over 150 young people in 1:1 or small group settings and devised a bespoke programme for year 6 bubbles as they return this month. We have also engaged countless other young people; with our work in the arts - delivering both in curriculum and extra curricular sessions, through information and signposting from self referrals or contact from parents of young people, and through our other well-being and life skills workshops or community based events.



Here are just some of our partner schools we have been fortunate to work with and thank them for continuing to support us in the many ways they do.



Donnington Wood



Tettenhall College  
ENGLAND



Wolverhampton Girls' High School  
"Lectus Supra Praecurium"



WALSALL  
STUDIO SCHOOL  
Transforming Your Future



# TRAINING



This year has seen our training numbers and courses offered increase, despite the difficulties and extra strain schools have endured. We were quick to make our training more flexible and responsive to the challenges people were facing. This is the benefit of training with us, as we get to see the real issues, effective solutions and good practice through our work with Senior Leaders and SENco/Pastoral teams in our partner schools.

We now offer the full suite of Youth Mental Health First Aid England courses; 2 day, 1 day and half day sessions. As well as still running public and open courses, we have offered courses online and in house for larger numbers of staff across Academy groups and teaching alliances. Going online has widened our reach. This year we have also trained students in FE, as well as parents of our partner schools.

We have also begun training for the National Education Union, across the 11 West Midlands branches on various areas of social, emotional health and inclusivity.



## 40

*Youth Mental Health First Aiders Trained with us, despite courses in March and June being postponed.*



## 16

*Members of Staff in one Secondary School completed our Youth MHFA Champions one day course.*



## 120

*Parents, Young People, Teachers and Youth Workers have completed our Youth MHFA Aware half day course, face to face or online.*



## 30

*NEU members attended training on Supporting Emotional Development Needs*



# "ROCK OF AGES"



This year we have strengthened our relationships with Wolverhampton Music Education Hub, with Bedazzle joining the official hub partners and managing Wolverhampton Youth Music Theatre (WYMT), a summer outreach programme for young people interested in music and theatre from 14-21 years old. WYMT celebrated its 20th Anniversary this year and we are delighted to be continuing that journey with them and some of the founding directors

Our summer production at the Arena Theatre, Rock of Ages, was the most technically challenging to date but we felt 20 years was something worth celebrating and showcasing WYMT at its best. More information on WYMT and the history can be found on our website and the dedicated Facebook page. The talented youngsters also produced A Christmas Concert in just one day, on December 27th, at our base at The Music School.



Whilst lockdown will inevitably mean for the first year ever, we will not be able to perform in our usual capacity in Summer 2020 we are thankful for the continued support this programme receives as a hub partner and look forward to coming back bigger, better and stronger than before. Rock of Ages saw almost 50 members in on and off stage roles. Many of this years principals have now begun their professional training at schools and conservatoires across the country.

Supported using public funding by



**ARTS COUNCIL  
ENGLAND**



WOLVERHAMPTON EDUCATION  
**MUSIC Hub**

**CITY OF  
WOLVERHAMPTON  
COUNCIL**